



Providing quality
geotechnical data
for over 20 years

acoustic scanner and optical televiewer interpretation

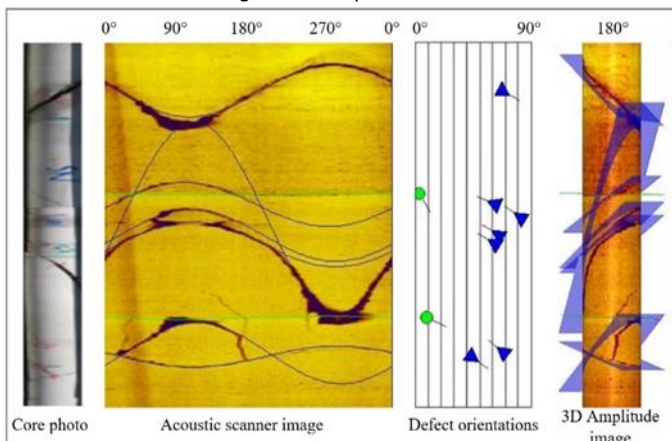
ACOUSTIC SCANNER/OPTICAL TELEVIEWER INTERPRETATION

We provide orientation data from downhole geophysical and acoustic/optical logs. This data can assist with ground and slope stability assessment, infrastructure planning and development, optimisation of foundations and drainage, and potential hazard reduction.

OUR SERVICES COMPRISE

- manual interpretation of defects from acoustic scanner and optical televiewer data
- if available, core photographs and geotechnical logs are used to perform an *integrated interpretation* of the scanner data. This type of interpretation is a speciality of *asims* and provides a more thorough assessment of data and greater confidence in identified discontinuities
- analysis of interpreted data, including grouping data into major and minor sets and extracting average orientations

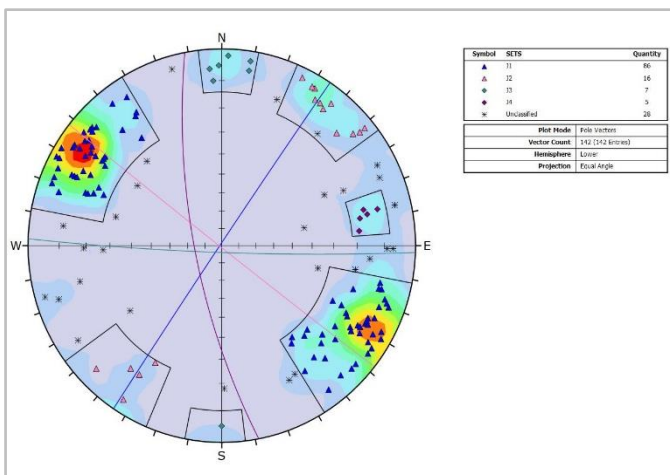
Integrated interpretation



OUR REPORT CONTAINS

- orientation of bedding, joints and faults
- defined defect sets
- direction of the principal horizontal stress from borehole breakout
- comprehensive presentation of data including tabulated and graphical outputs

Stereonet analysis of joint sets



Our experienced *asims* geologists use in-house techniques to extract only relevant and reliable data to derive geotechnical parameters.

Data can be sourced from both core and non-core holes, provided the drill hole wall is reasonably smooth.

Acoustic scanner and optical televiewer reports can be customised to your requirements.

Contact us for a copy of a demonstration report

Stacey Pell (*asims* manager)

+ 61 418 974 399

stacey.pell@mbgs.com.au

<https://mbgs.com.au/our-services/asims/>

